

# 'Certificate of Eligibility for Ceiling-Amount Application'



This is targeted for the age group of...

69 years old or under

For people who are 69 years old or under

For insured patients who are 69 years old or under, your monthly payment at the cashier will be no more than a specified amount shown in the table below by presenting the "Certificate of Eligibility for Ceiling-Amount Application" to the medical institution with your health insurance card especially if you will be admitted for a long period of time or if your medical expenses are expected to be high. (Please note that meals, extra charges for rooms, private practices etc. are not covered.)

## Monthly copayment with ceiling-amount

Type	Monthly payment with ceiling-amount (within 12 months including your 1 <sup>st</sup> month)		Each meal fee in the hospital
	Until 3 <sup>rd</sup> time	After 4 <sup>th</sup>	
a	252,600 + (total medical fees – 842,000 yen) x 1%	140,100 yen	460 yen
i	167,400 + (total medical fees – 558,000 yen) x 1%	93,000 yen	460 yen
u	80,100 + (total medical fees – 267,000 yen) x 1%	44,400 yen	460 yen
e	57,600 yen	44,400 yen	460 yen
o	35,400 yen	24,600 yen	210 yen If over 90 days, decreased to 160 yen by applying

※Total medical fees indicate 100% medical fee payment.

※Meal fees are left unchanged for patients with tax-exempt households, intractable disease, and specified chronic childhood disease.

※Above is the amount for one month **from the 1<sup>st</sup> to the last day of each month. Please be careful that calculations are conducted separately for inpatient care and outpatient care.**

※Meals and extra charges for hospital rooms are not included in self-pay with ceiling-amount.

※You cannot apply for the past months payment.

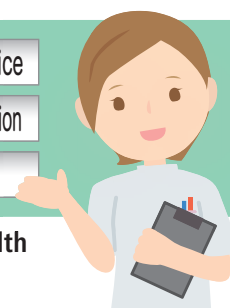
## Things to be careful when calculating your copayment with ceiling-amount

- 1 Calculate by calendar month (from the 1<sup>st</sup> to the last day of each month)
- 2 Calculate different clinical departments together if they belong to the same medical institution
- 3 Calculate Medical and Dental department separately even if they belong to the same medical institution
- 4 Calculate inpatient and outpatient care separately
- 5 Meals, extra charges for hospital rooms, private practice in dentistry, etc. during hospitalization that are not covered by insurance are not included

※Household including a person over 70 years old will get reimbursement from the National Health Insurer if total medical fees within the same household get over the ceiling-amount payment.

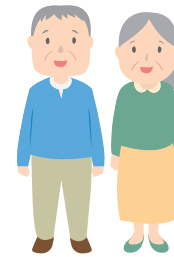
For consultation

- National health insurance holders: Person in charge at Municipal Office
- Social insurance holders: The Japan Health Insurance Association
- Mutual or cooperative insurance holders: Person in charge



※Please present your 'Certificate of Eligibility of Ceiling-Amount' together with health insurance card on the day of admission and on the first day of every month.

# 'Certificate of Eligibility for Ceiling-Amount Application' 'Eligibility for Ceiling-Amount Application and Reduction of the Standard Amount of Patient Liability'



This is targeted for the age group of...

70 years old and above

※Include some of those who are 65 yrs. old or above

For those who are between 70 and 74 yrs. old / with Medical Care System for Older Senior Citizens

For some of those with income comparable to current workforce (copayment of 30%), they can apply for the 'Certificate of Eligibility for Ceiling-Amount Application' to the insurer and present it to the medical institution so that your monthly payment at the cashier will be no more than a specified amount shown in the table below (green frame). Additionally, if all members of the household are exempted from tax, they can apply for the 'Eligibility for Ceiling-Amount Application and Reduction of the Standard Amount of Patient Liability' to the insurer and present it to the medical institution so that your monthly payment at the cashier will be no more than a specified amount shown in the table below (red frame). Please refer to monthly payment with ceiling amount. (Please note that meals, extra charges for rooms, private practices etc. are not covered.)

## Monthly copayment with ceiling-amount

Copayment category	Type	Monthly payment with ceiling-amount (within 12 months including your 1 <sup>st</sup> month)		Each meal fee in the hospital
		Until 3 <sup>rd</sup> time	After 4 <sup>th</sup>	
★ People with income comparable to current workforce	Ⅲ	252,600 + (total medical fees – 842,000 yen) x 1%	140,100 yen	460 yen
	Ⅱ	167,400 + (total medical fees – 558,000 yen) x 1%	93,000 yen	460 yen
	I	80,100 + (total medical fees – 267,000 yen) x 1%	44,400 yen	460 yen
General		57,600 yen	44,400 yen	460 yen
Low-income groupⅡ	TypeⅡ	24,600 yen	24,600 yen	210 yen If over 90 days, decreased to 160 yen by applying
Low-income groupⅠ	TypeⅠ	15,000 yen	15,000 yen	100 yen

★ If not applied for ceiling amount certificate, medical cost will be calculated by using Ⅲ. If patient falls into Ⅱ or I, they can get refunded by the insurer after payment.

※ Total medical fees indicate 100% medical fee payment.

※ Meal fees are left unchanged for patients with tax-exempt households, intractable disease, and specified chronic childhood disease.

※ Above is the amount for one month from the 1<sup>st</sup> to the last day of each month. Please be careful that calculations are conducted separately for inpatient care and outpatient care.

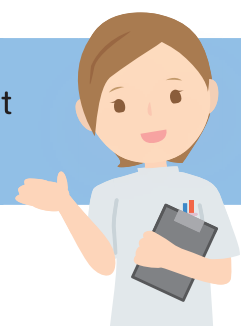
※ Meals and extra charges for hospital rooms are not included in self-pay with ceiling-amount. ※ You cannot apply for the past months payment.

## Things to be careful when calculating your copayment with ceiling-amount

- 1 Calculate by calendar month (from the 1<sup>st</sup> to the last day of each month)
- 2 Calculate different clinical departments together if they belong to the same medical institution
- 3 Calculate Medical and Dental department separately even if they belong to the same medical institution
- 4 Calculate inpatient and outpatient care separately
- 5 Meals, extra charges for hospital rooms, private practice in dentistry, etc. during hospitalization that are not covered by insurance are not included

For consultation

- Please inquire of the health insurance division at each Municipal Office or of the insurer.



※ Please present your 'Certificate of Eligibility of Ceiling-Amount' together with health insurance card on the day of admission and on the first day of every month.