

Floor Map

5F

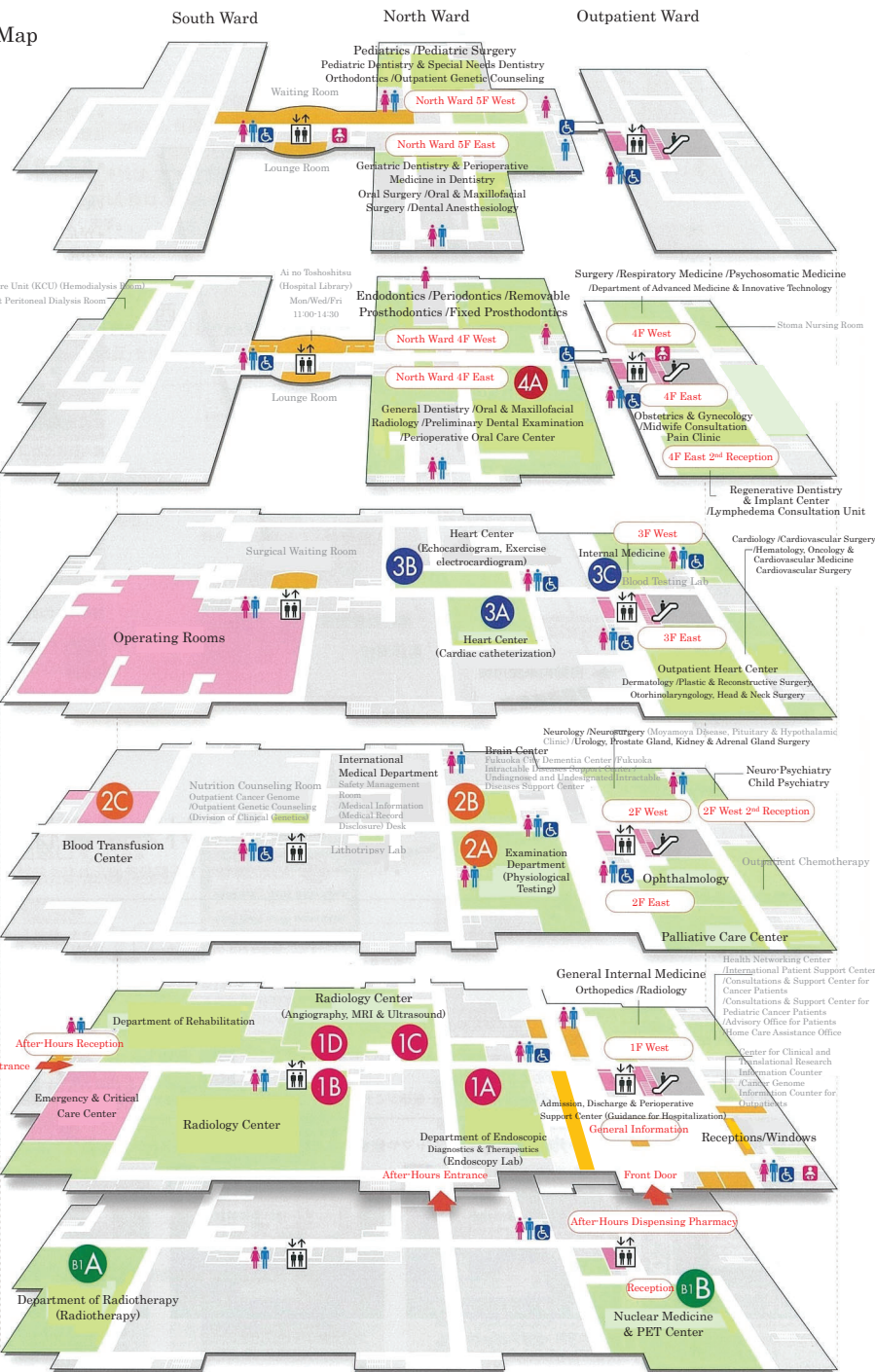
4F

3F

2F

1F

B1F



Medical Care / Tests ● Please refer to the KUH website for more information of departments, etc.

	South/North Ward	Outpatient Ward	Floor	
NW	<p>North Ward 5F West Block Reception</p> <p>Pediatrics /Pediatric Surgery /Pediatric Dentistry & Special Needs Dentistry /Orthodontics /Outpatient Genetic Counseling</p> <p>North Ward 5F East Block Reception</p> <p>Geniatric Dentistry & Perioperative Medicine in Dentistry /Oral & Maxillofacial Surgery /Dental Anesthesiology</p>	<p>West Block</p> <p>Management Department (Department of Pharmacy)</p>	<p>East Block</p> <p>Management Department (Department of Nursing /Administration Department)</p>	5
NW	<p>4A Oral & Maxillofacial Radiology</p> <p>North Ward 4F West Block Reception</p> <p>Periodontics /Endodontics /Removal Prosthodontics /Fixed Prosthodontics</p> <p>North Ward 4F East Block Reception</p> <p>General Dentistry /Oral & Maxillofacial Radiology /Preliminary Dental Examination /Perioperative Oral Care Center</p>	<p>4F West Block Reception</p> <p>Surgery /Respiratory Medicine /Psychosomatic Medicine /Department of Advanced Medicine & Innovative Technology</p> <p>Fukuoka Prefectural Treatment & Support Center for Eating Disorders</p>	<p>4F East Block Reception</p> <p>Obstetrics & Gynecology /Midwife Consultation /Pain Clinic (Anesthesiology & Critical Care Medicine)</p> <p>4F East 2nd Block Reception</p> <p>Regenerative Dentistry & Implant Center /Lymphedema Consultation Unit</p>	4
SW	Kidney Care Unit /Outpatient Clinic for Peritoneal Dialysis			
NW	<p>3A Heart Center Catheterization Lab (Cardiac Catheterization)</p> <p>3B Heart Center Echo & Physiology Lab (Echocardiography, Exercise Electrocardiogram (ECG))</p>	<p>3F West Block Reception</p> <p>Internal Medicine/Advanced Molecular & Cell Therapy</p> <p>3C Blood Testing Lab Outpatient Testing Lab</p> <p>Nursing Instruction Room (Diabetes Foot Care Unit) /Long-Term Follow-Up Programs for Post-Hematopoietic Stem Cell Transplant Patients /Preventive Guidance for Diabetic Dialysis</p>	<p>3F East Block Reception</p> <p>Heart Center for Outpatients Cardiology/Hematology, Oncology & Cardiovascular Medicine Cardiovascular Surgery Dermatology Otorhinolaryngology, Head & Neck Surgery Plastic & Reconstructive Surgery</p>	3
NW	<p>2A Electrocardiogram /Pulmonary function /Electroencephalogram /Electromyogram</p> <p>2B Brain Center</p> <p>Intractable Disease Information Center /Dementia Information Plaza /Fukuoka Intractable Diseases Center /Undesignated & Undesignated Intractable Diseases Support Center</p>	<p>2F West Block Reception</p> <p>Neurology Neurosurgery (Moyamoya Disease, Pituitary & Hypothalamic Clinic) Urology, Prostate Gland, Kidney & Adrenal Gland Surgery</p>	<p>2F East Block Reception</p> <p>Ophthalmology</p>	2
SW	<p>2C Autologous Blood Collection Room</p> <p>Nutrition Consultation Room</p>	<p>2F West Block 2nd Reception</p> <p>Neuro-Psychiatry Child Psychiatry</p>	<p>Outpatient Chemotherapy</p> <p>Palliative Care Center Outpatient Palliative Care for Pain Outpatient Palliative Care for Mind Cancer Nursing Consultation Oncology Pharmacist Consultation</p>	
NW	<p>1A Endoscopy</p> <p>1B Radiology Center (Chest /Abdomen /Bone) CT /Mammography /Pediatric Radiography Fluoroscopy / Bone Mineral Densitometry</p> <p>1C MRI</p> <p>1D Ultrasonography (Neck /Chest /Abdomen)</p> <p>Angiography</p>	<p>1F West Block Reception</p> <p>General Internal Medicine Orthopedics (Radiology) Sleep Apnea Center</p>	<p>? General Information ① First Visit Reception ③ Return Visit Reception ④ Accounting ⑤ Cashier ⑥ Hospitalization Reception Admission, Discharge & Perioperative Support Center (Guidance for Hospitalization) /Image Uploading Reception /Medical Certificate Desk ⑧ Outpatient Prescription Counter ⑨ Public Welfare Desk /Guidance for Examination /Center for Clinical & Translational Research Information Counter /Cancer Genome Information Counter for Outpatients /ATM</p>	1
SW	<p>Emergency & Critical Care Center Pediatric Emergency & Critical Care Center Department of Rehabilitation After-hours Reception</p>	<p>Health Networking Center International Patient Support Center International Patient Support Center for Cancer Patients /Consultations & Support Center for Pediatric Cancer Patients Advisory Office for Patients Home Care Assistance Office Center for Clinical and Translational Research Information Counter Cancer Genome Information Counter for Outpatients</p>	<p>Health Networking Center International Patient Support Center Consultation & Support Center for Cancer Patients Advisory Office for Patients Homecare Assistance Office In-hospital Dispensing Pharmacy Desk /Internet Terminals /ATM /Restaurant Convenience Store</p>	
SW	<p>B1A Department of Radiotherapy (Radiotherapy)</p>	<p>Dispensing Pharmacy Desk (After-hours)</p>	<p>B1B Nuclear Medicine PET Center (PET /SPECT /Scintigraphy)</p>	B1

Guidance p2

Medical & Dental Appointments p3

Outpatient Flow p4

Outpatient 1F p5

Floor Map p6

Medical Care/Tests p7